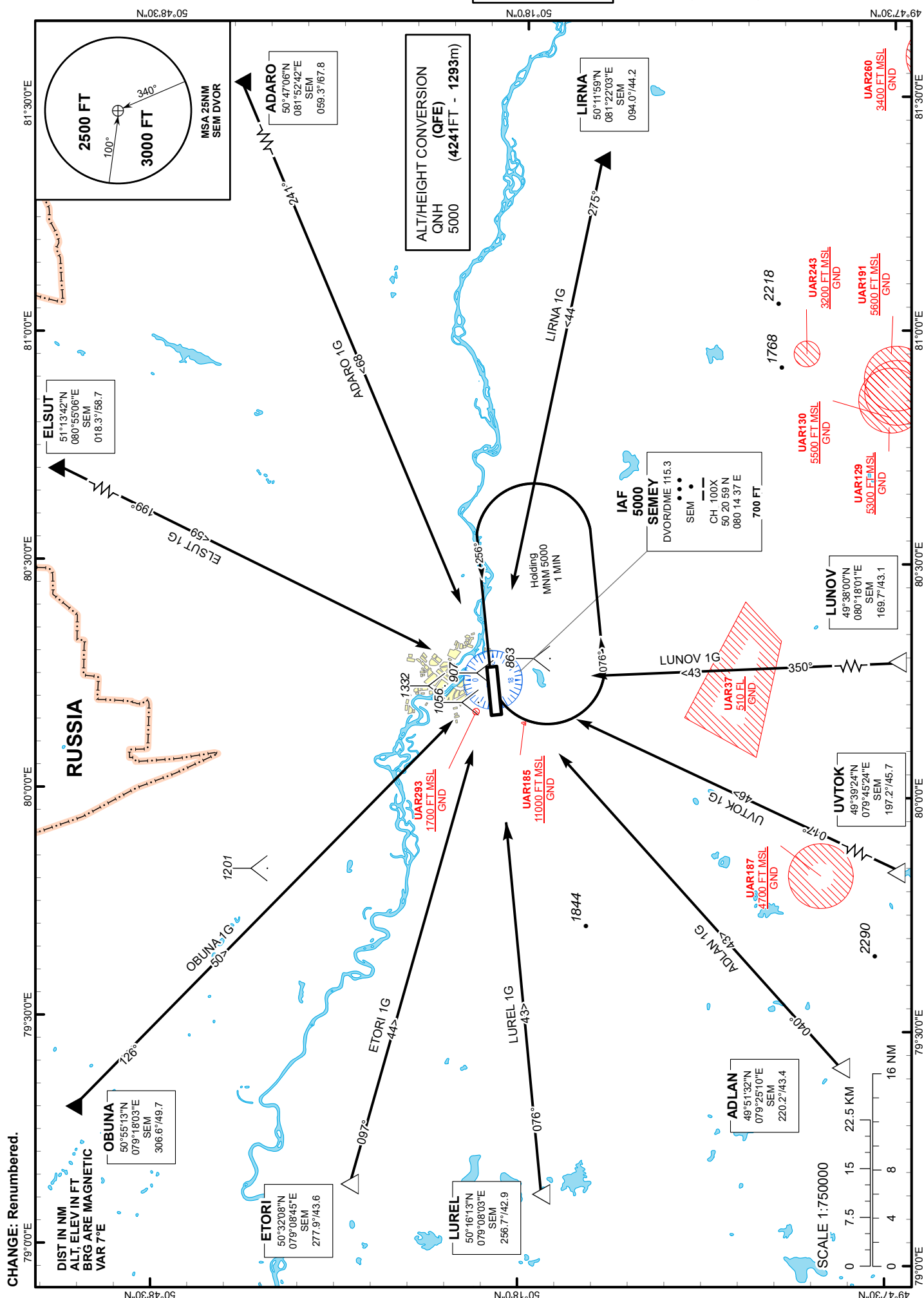


TRANSITION ALTITUDE  
10000 FT

SEMEY TOWER 128.0
SEMEY ATIS (EN) 118.5
SEMEY ATIS (RU) 122.4

ADARO 1G, ADLAN 1G, ELSUT 1G,  
ETORI 1G, LIRNA 1G, LUNOV 1G,  
OBUNA 1G. LUREL 1G. UVTOK 1G

**SEMEY**  
**RWY 08**



<b>STANDARD ARRIVAL ROUTES - INSTRUMENT (STAR) SEMEY RWY 08</b>
<b>ELSUT 1G</b> After crossing ELSUT (R018.3° D58.7NM SEM), proceed on track 199° to SEM. Cross SEM at 5000 FT
<b>ADARO 1G</b> After crossing ADARO (R059.3° D67.8NM SEM), proceed on track 241° to SEM. Cross SEM at 5000 FT
<b>LIRNA 1G</b> After crossing LIRNA (R094.0° D44.2NM SEM), proceed on track 275° to SEM. Cross SEM at 5000 FT
<b>LUNOV 1G</b> After crossing LUNOV (R169.7° D43.1NM SEM), proceed on track 350° to SEM. Cross SEM at 5000 FT
<b>UVTOK 1G</b> After crossing UVTOK (R197.2° D45.7NM SEM), proceed on track 017° to SEM. Cross SEM at 5000 FT
<b>ADLAN 1G</b> After crossing ADLAN (R220.2° D43.4NM SEM), proceed on track 040° to SEM. Cross SEM at 5000 FT
<b>LUREL 1G</b> After crossing LUREL (R256.7° D42.9NM SEM), proceed on track 076° to SEM. Cross SEM at 5000 FT
<b>ETORI 1G</b> After crossing ETORI (R277.9° D43.6NM SEM), proceed on track 097° to SEM. Cross SEM at 5000 FT
<b>OBUNA 1G</b> After crossing OBUNA (R306.6° D49.7NM SEM), proceed on track 126° to SEM. Cross SEM at 5000 FT